



Glos SS

I. Description

A system of solutions for natural daylight, natural ventilation and smoke and heat ventilation in event of fire.

1.1.Integrity in

- All types of roof packages and constructions
- Roof lights
- Glass construction

1.2. Function

- Natural day light
- Natural ventilation
- Smoke and heat ventilation

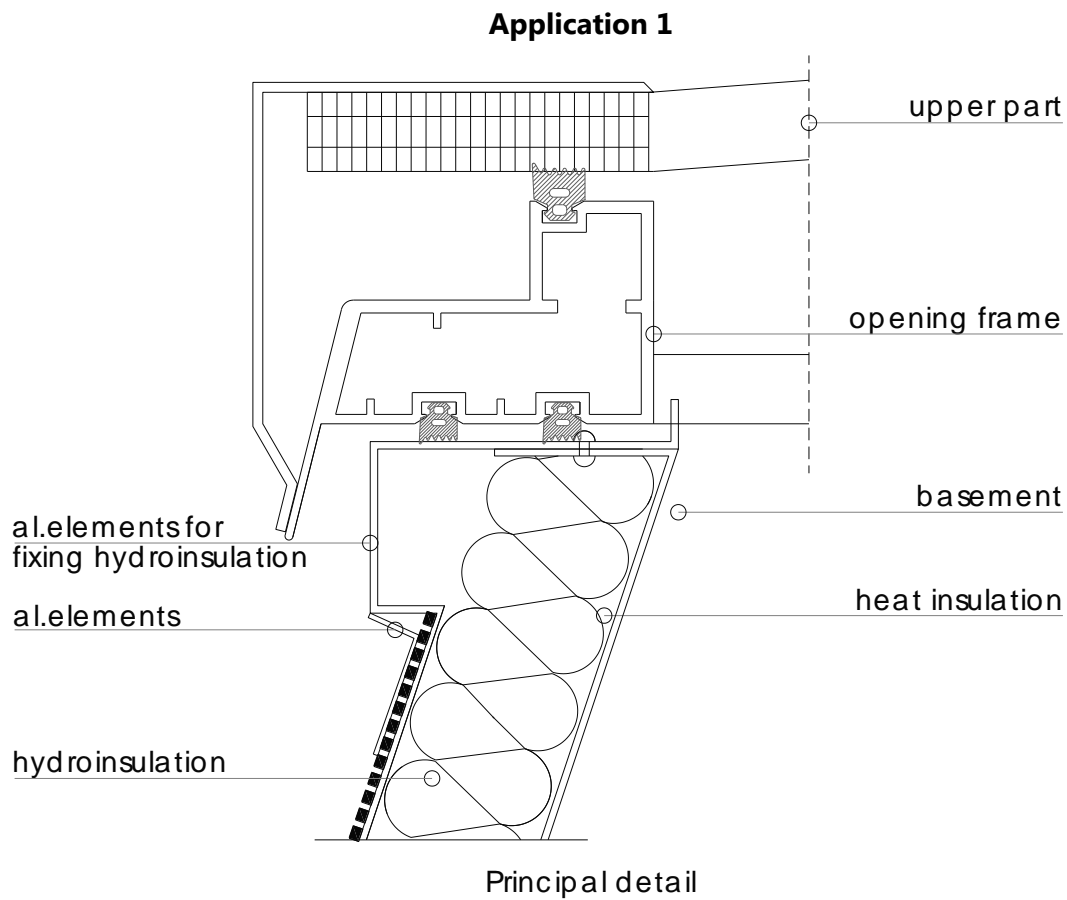
1.3. Correspondence

Glos SS is in accordance with the following Directives and Standards:

General standards		
1	EN 12 101-2	1396-C PD-0041
2	ISO 9001: 2008	
Additional test and approvals		
3	EN 12 567-1 / EN ISO 140-3	ITT - 003 Weiss pro fil
4	EN 12 567-1 / EN ISO 140-3	ITT - 019 Weiss pro fil
5	EN 1873	2005 - J1200 Fires-MP-024-12 AUNE
6	EN 1026	2003 - SP - Pr.77
7	EN 10 077-1,2	SP - Pr.27



II. Components



2.1. Basement

No	Type of materials	Thikness	Height	Coefficient of thermal transmission
1	Galvanized steel	1,2 mm	150 mm	50mm mineral wool $U_g=0,9W/m^2.K$
2	Stainless steel	1,5 mm	300 mm	
3	Al/Mg alloy	2,0 mm	450 mm	
				100mm mineral wool $U_g=0,5W/m^2.K$

Sizes:

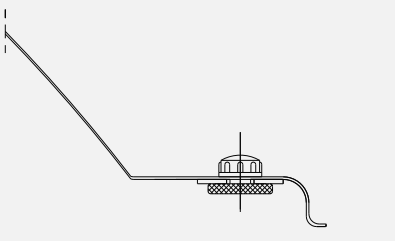
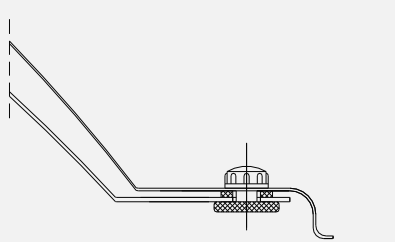
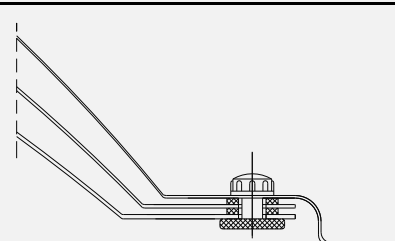
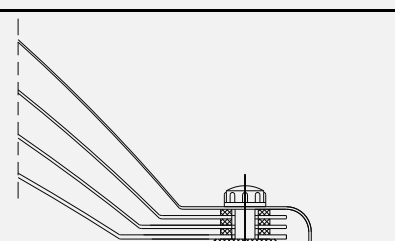
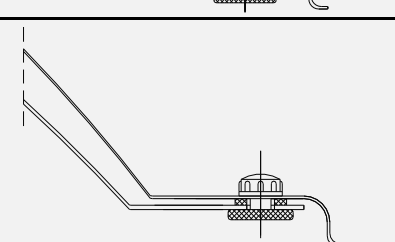
- From 500 to 2000mm width
- From 500 to 6000mm length



2.2.Types upper parts

2.2.1. Thermo formed upper parts - 1, 2, 3 or 4 layers:

Application 2

No	Types	View	Lt [%]	G value [%]	U value [W/ m ² .K]	Si [db]
1	1 PMMA opal		83	73	5,4	17
2	2 PMMA clear/opal		69	53	2,7	24
3	3 PMMA cl/cl/opal		63	45	1,7	28
4	4 PMMA		55	41	1,3	31
5	Solid PC/ 2PMMA		73	61	2,7	25



6	Solid PC/ 3PMMA		67	52	1,8	28
7	2PMMA + PC 16m m		40	39	1,3	24

Note: Triangular and circular shape of the thermo formed part are possible upon request!

2.2.2. Cellular polycarbonate upper parts:

Application 3

No	Types	View	Lt [%]	G value [%]	U value [W/ m ² .K]	Si [db]
1	PC 10m m		61	61	2,5	17
2	PC 16m m		54	55	2	18
3	PC 20m m		47	47	1,67	20



4	PC 25m m		40	42	1,3	22
5	PC 32m m		38	41	1,1	24
6	PC 16m m, NG		64	50	1,31	21
7	PC 25m m, NG		67	42	1,1	18

Note: Position 6 and 7 are with aerogel inside.

2.2.3. Package solutions:

Application 4

No	Types	View	Lt [%]	G value [%]	U value [W/ m ² .K]	Si [db]
1	PC 10+4m m		52	52	2,2 - 2,0	21



2	PC 10+6m m		50	51	1,9 - 1,7	22
3	PC 16+4m m		44	44	1,4 - 1,0	27
4	PC 16+6m m		42	43	1,2 - 1,0	28
5	PC 16+10m m		38	40	1,1 - 0,9	32
6	PMMA / PMMA		69	53	2,7	24
7	PC / PMMA		73	61	2,7	25
8	Glass package		77	63	1,7	37
9	DK 40÷80m m		0	0	1,2 - 0,65	24

Note: 1. Upper part can be OF/RO or OF/BG option.

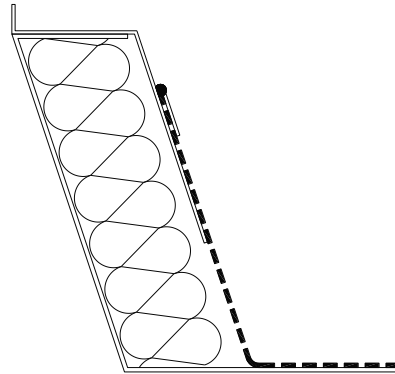
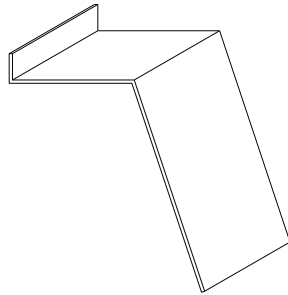
2. The gasket kit is option of solution type "forced".



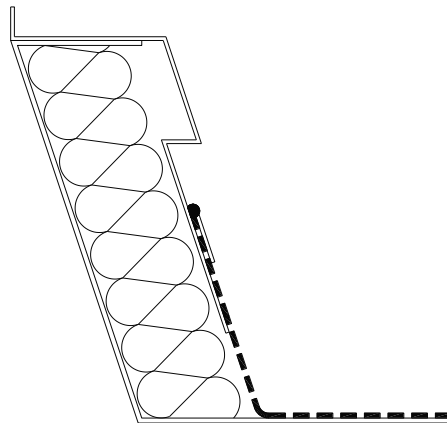
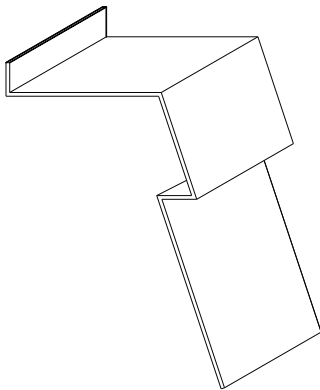
2.3. Joining elements

2.3.1. Hydro insulation fixing

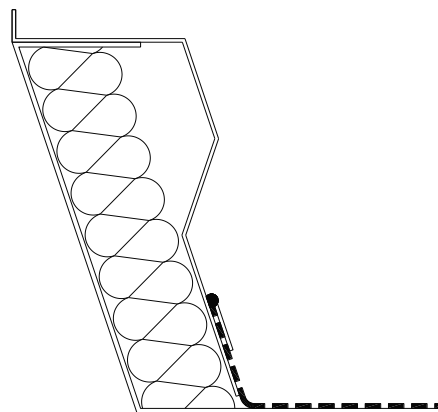
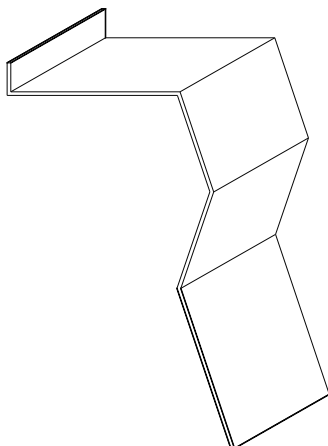
- **Type 1** – Fitting for PVC / TPO / bitumen / EPDM / other hydroinsulation



- **Type 2** – Fitting with PVC hydroinsulation

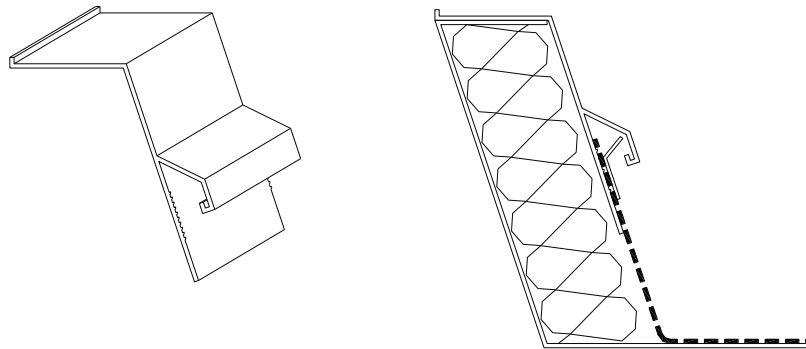


- **Type 3** – Fitting with PVC hydroinsulation





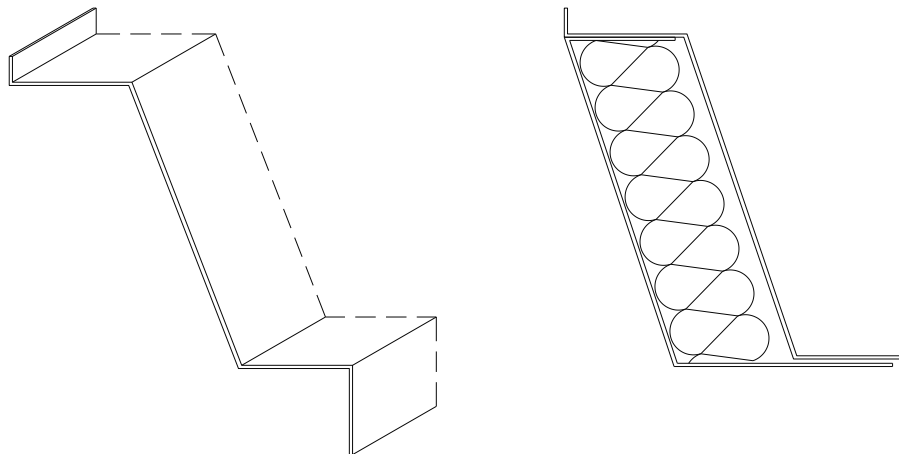
- **Type 4** – Fitting with PVC hydroinsulation



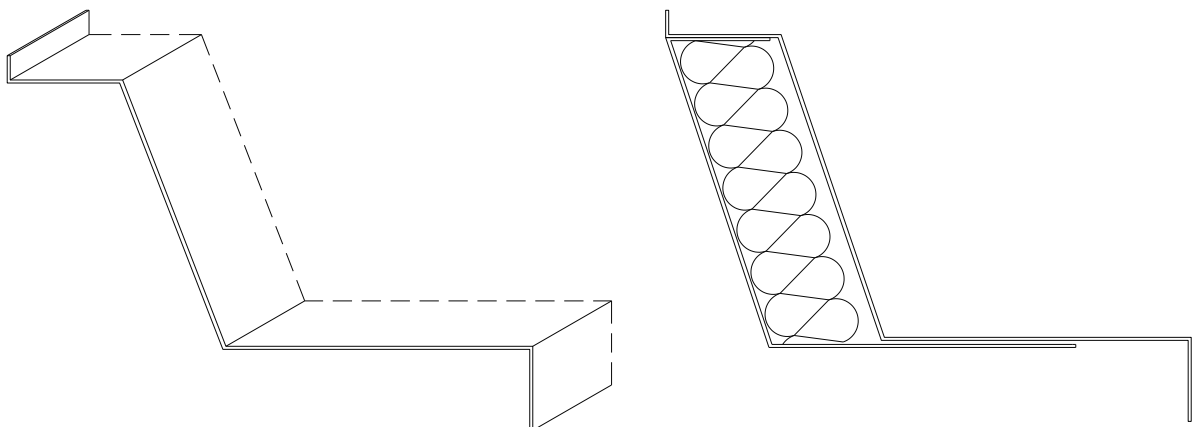
Note: Option for joining elements: powder coated, visible part(RAL).

2.3.2. Aluminium case

- **Type 1** – For installation on reinforced board

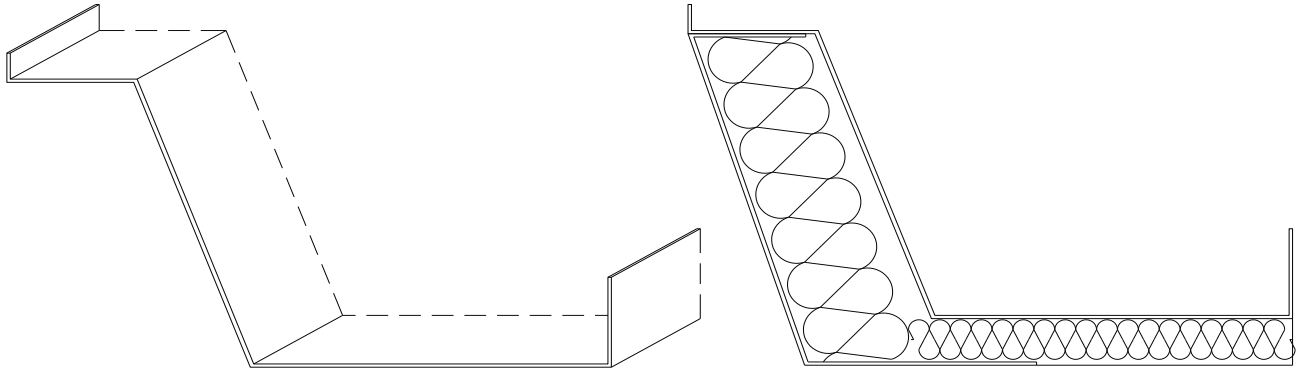


- **Type 2** – For installation on sandwich panel

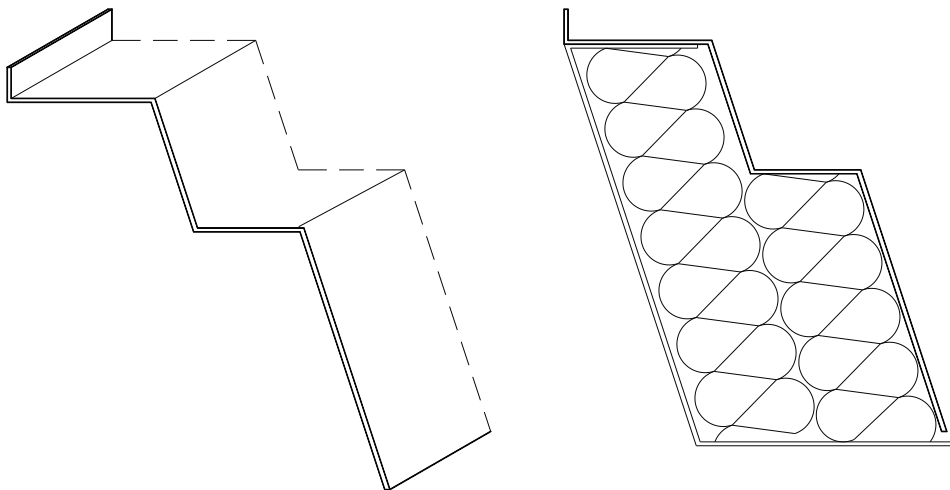




- **Type 3** – For installation in roof light



- **Type 4** – Thermal insulation forced



2.4. Function upgrade elements

- Wind deflector
- Safety grid
- Burglar grid
- Insect and bird screen
- Belt connectors
- Sun protection elements – inside/outside
- Integration case
- Ventilated board



III. Ventilation function and roof access

3.1. Daily ventilation

- Motor 230V, AC. Opening height - 300/500mm



- Chain drive 24V, DC. Opening height 200/300/400/500mm



- Pneumatic cylinder. Opening height - 300/500mm





3.2. RWA function

Reliability	Re 1000
Snow load	SL 500 – SL 1000
Low ambient temperature	T (00)
Wind load	WL 1500
Resistance to heat classification	B 300

3.3. RA – solution for roof access

- Gas springs
- Handle
- Locking device

3.4. Technical parameters

3.4.1. Glos SS EXT GA

- High thermo insulation
- Excellent sound insulation
- EN 12 567 / EN ISO 140-3 – ITT – 003 Weiss Profil

U value [W/m ² .K]	Si [db]
0,9	0,33 по EN 14351-1

- EN 12 567 / EN ISO 140-3 – ITT – 019 Weiss Profil

U value [W/m ² .K]	Si [db]
0,9	0,38 по EN 14351-1



3.4.1. Glos SS EXT GB

- Hit resistance

J 1200 impact of large and small body	EN 1873 2005 - FRESMP-024-12 AUNE
---	---

- Air permeability

Class 3	EN ISO12 207 Air permeability
----------------	---

- Coefficient of thermal transmission of entire unit

U value [W/ m².K]	1,66
-------------------------------------	-------------

Note: For more information, please contact your consultant.