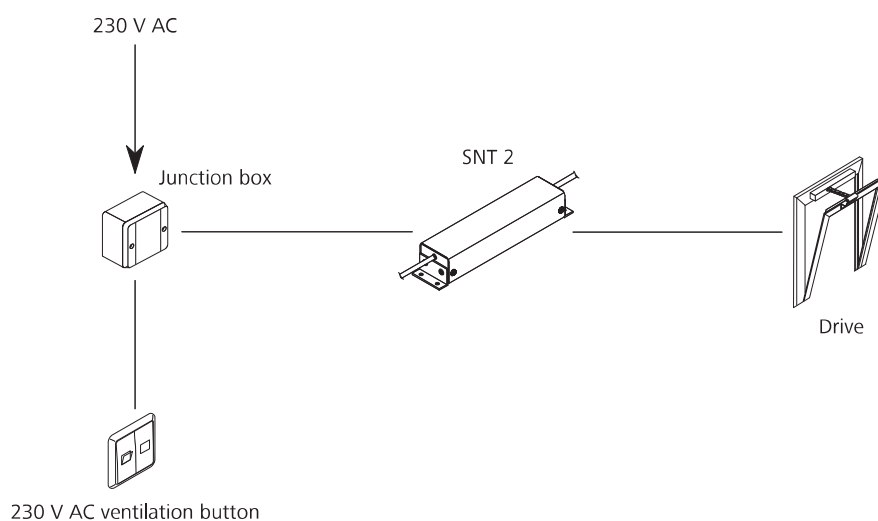


## Example of application



## Technical data

	SNT 2
Supply	230 V AC / 50 Hz / 110 VA
Output	24 V DC / 2 A
Mode of operation	Short-time duty 20 % duty cycle
Type of protection	IP 50
Temperature range	0 °C ... +60 °C
Housing	Aluminium
Colour	Silver (~ RAL 9006)
W x H x D	232 x 50 x 40 mm
Weight	0.80 kg

## Approvals / Certificates

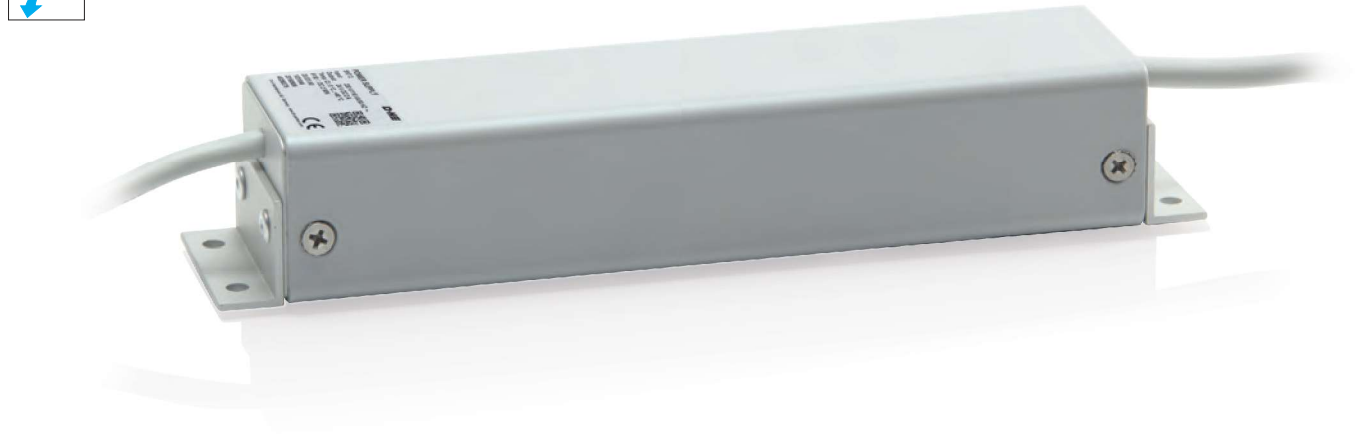
Article also available with the following permissions under other article numbers. Technical data may deviate. Find out about permission details from your D+H Partner.



## Design

Type	Art. No.
SNT 2	20.031.60

# SNT 2



## Performance features

- » External ventilation power supply unit, 230 V AC
- » For controlling 24 V DC drives
- » Up to 2 A total drive current
- » Activation, e.g. using 230 V AC ventilation button
- » Surface-mounted design

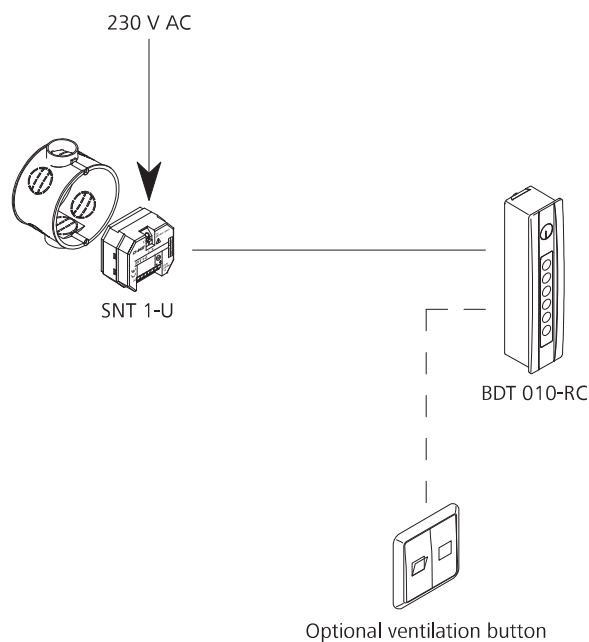
## Accessories

Operation elements



starting on page 152

## Example of application



## Technical data

	SNT 1-U
Supply	230 V AC / 50 Hz / 30 VA
Output	24 V DC / 1 A
Mode of operation	Short-time duty 20 % duty cycle
Type of protection	IP 30
Temperature range	0 °C ... +50 °C
Housing	Plastic
Colour	Light grey (~ RAL 7035)
W x H x D	50 x 48 x 28 mm
Weight	0.13 kg

## Design

Type	Art. No.
SNT 1-U	20.032.40

# SNT 1-U



## Performance features

- » External ventilation power supply unit, 230 V AC
- » For BDT 010 power supply
- » Option for connecting to a maximum of one BDT 010
- » Up to 1 A total drive current
- » Activation, e.g. using 230 V AC ventilation button
- » For installing in 55 mm flush-mounted socket (not included)

## Accessories

Operation elements



starting on page 152

BDT

