

Possible applications

Illustration provided as an example



- » Mounted installation
- » Sash mounting
- » Frame mounting
- » Application force
- » Application tension

1

2

3

4

5

6

7

8

9

10

11

12

13

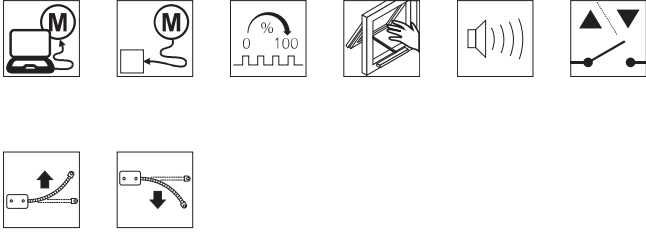
14

15

KA-TW-BSY+

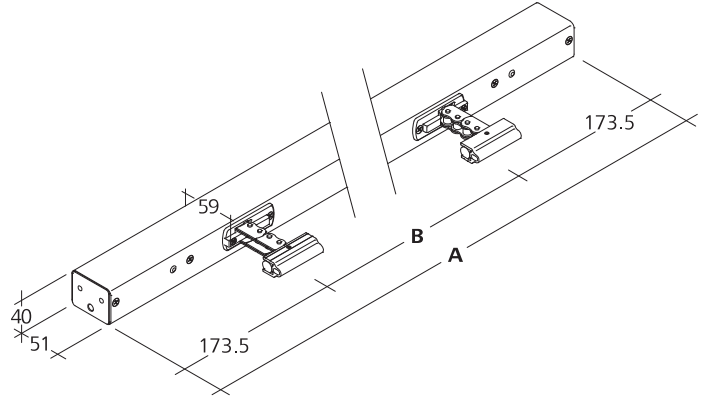
Potential drive options

You can find the explanations for the icons on the last page.



Dimensions

All specifications in mm

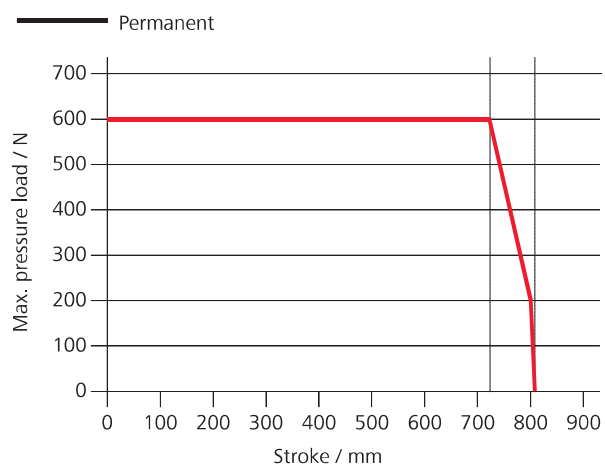


Design

| Type | Art. No. | Stroke | Dimension A | Dimension B | Weight | Remark |
|---------------|-----------|--------|-------------|-------------|---------|--------------------------------|
| KA 66/500-TW1 | 26.013.40 | 500 mm | 1347 mm | 1000 mm | 4.40 kg | |
| KA 66/600-TW1 | 26.013.50 | 600 mm | 1347 mm | 1000 mm | 5.00 kg | |
| KA 66/800-TW1 | 26.013.60 | 800 mm | 1347 mm | 1000 mm | 5.60 kg | Observe pressure load diagram! |
| KA-TW-BSY+ | 26.013.00 | | | | | Variable equipment possible |

Brackets are not included and have to be ordered separately; suitable brackets starting on page 190

Pressure load diagram



Technical data

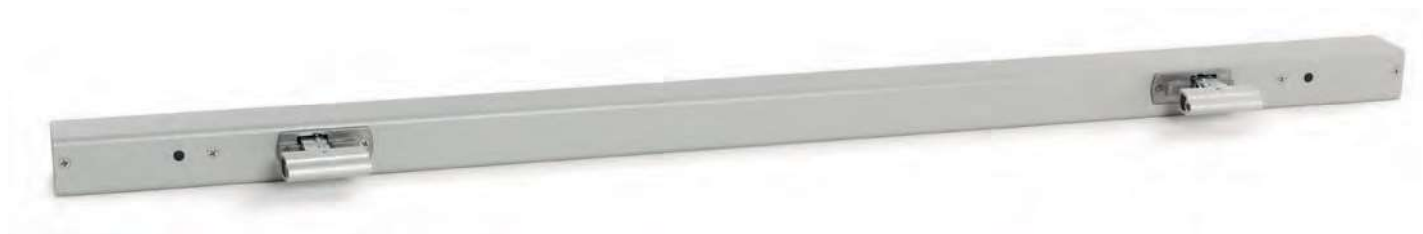
KA 66-TW

| | |
|-------------------------------|---------------------------------|
| Supply | 24 V DC / ±15 % / 2 A |
| Duty cycle | 30 % (ON: 3 min. / OFF: 7 min.) |
| Force of pressure | 600 N |
| Tensile force | 600 N |
| Nominal locking force | 3000 N |
| Service life | 20000 double strokes * |
| Stroke | 350 - 800 mm |
| OPEN running speed | 11.8 mm/s |
| OPEN running speed - SHEV | 12.2 mm/s |
| CLOSED running speed | 11.8 mm/s |
| Type of protection | IP 32 |
| Emission sound pressure level | LpA ≤ 70 dB(A) |
| Temperature range | -5 °C ... +75 °C |
| Fire resistance | B300 (30 min / 300 °C) |
| Housing | Aluminium |
| Surface | Powder-coated |
| Colour | White aluminium (~ RAL 9006) |
| Connection | 2.5 m silicone cable |
| Dimension A | 997 / 1347 mm |

For an illustration of the dimensions, see the next page.

* For vertical use, please consult with D+H Sales!

KA-TW-BSY+



Performance features

- » Can be used for openings for smoke exhaust; D+H Euro SHEV in accordance with EN 12101-2; and for daily ventilation
- » With BSY+ motor and synchronised electronics controlled via microprocessor
- » High-speed function (HS) for especially fast opening windows in case of fire (SHEV)
- » 2 drive chains for optimal power application to the sash
- » Special chain stabilisation
- » Relief of pressure on window gasket after closing process
- » Electronic force and position control
- » Programmable drive functions and different drive parameters
- » Running speed in CLOSED direction decreases to 5 mm/s (passive closing edge protection)
- » Time-controlled reversing when an obstacle is detected in the CLOSED direction (active closing edge protection)

Approvals / Certificates

Find out about permission details from your D+H Partner.



G 503007



5014068.18005-1



Article also available with the following permissions under other article numbers. Technical data may deviate.