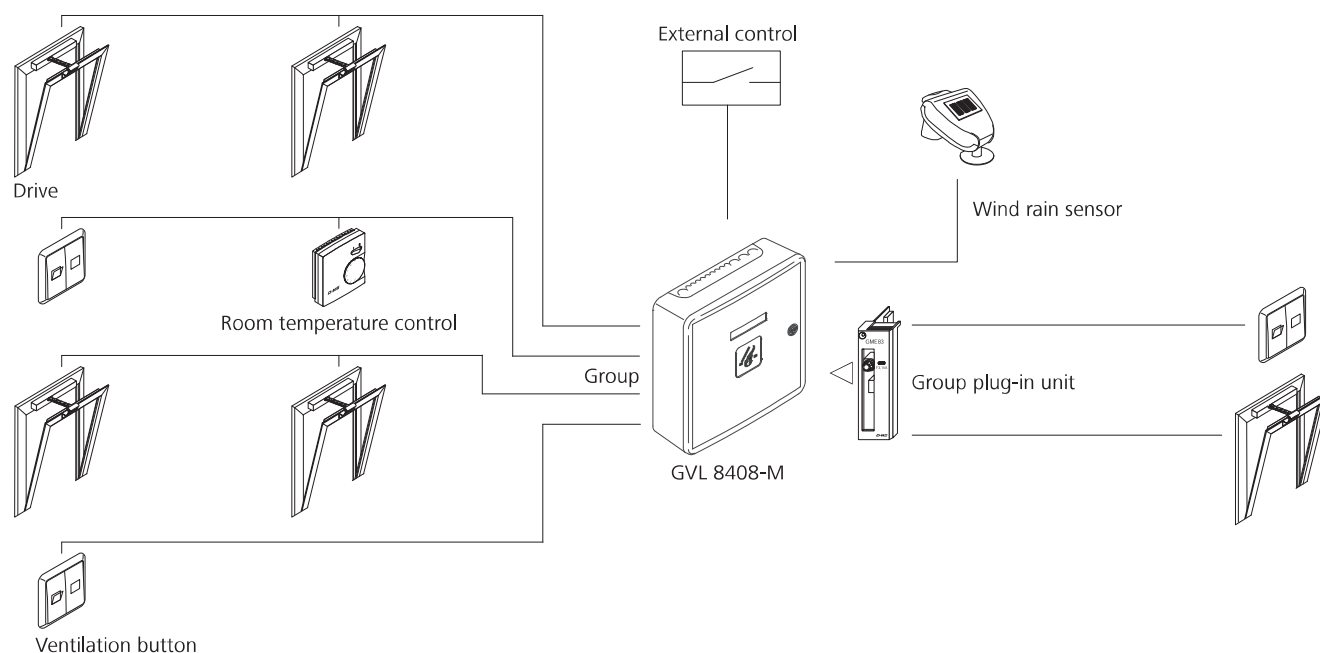


Example of application



Technical data

GVL 8408-M	
Supply	230 V AC / 50 Hz / 240 VA
Stand-by power	2.5 W
Output	24 V DC / 8 A
Mode of operation	Short-time duty 20 % duty cycle
Temperature range	-5 °C ... +40 °C

Approvals / Certificates

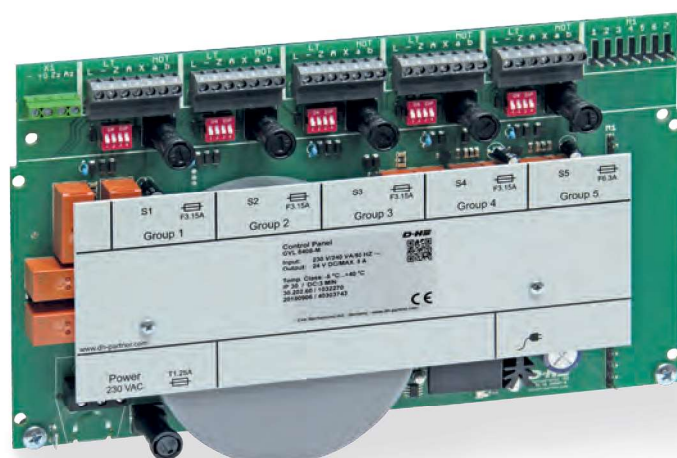
Article also available with the following permissions under other article numbers. Technical data may deviate. Find out about permission details from your D+H Partner.



Design

Type	Art. No.	Type of protection	Colour	W x H x D	Weight	Remark
ZP-GVL 8408-M	30.202.60				5.60 kg	
GEH-KST	63.600.81	IP 30	White (~ RAL 9016)	310 x 310 x 100 mm	1.40 kg	Plastic housing
GVL 83xx-E	30.208.00					Variable equipment possible

GVL 8408-M



Performance features

- » Expandable ventilation control panel
- » For controlling 24 V DC window drives
- » Up to 8 A total drive current
- » Stabilised output voltage
- » 5 ventilation groups (with optional GME 83, can be expanded to 6 groups)
- » Input for external controller, e.g. timer
- » Configurable ventilation safety function (storage operation OPEN / CLOSED)
- » Weather automation for individual groups can be switched on / off
- » Comfort ventilation functions using additional modules

Accessories

Plastic housing



Page 113

Modules



starting on page 130

Operation elements



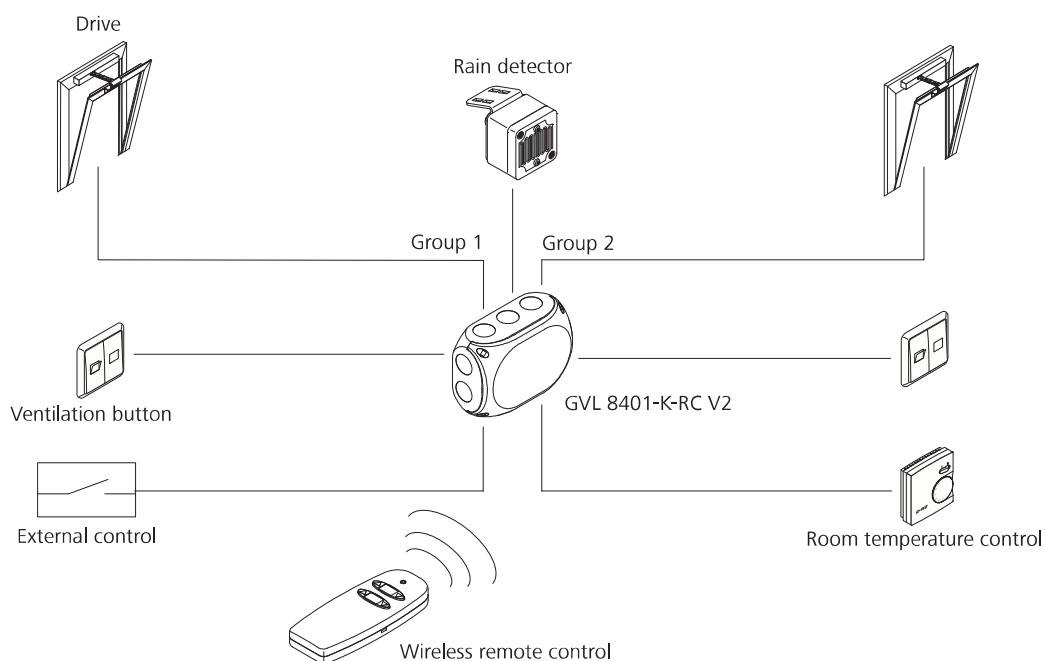
starting on page 152

Weather sensors



starting on page 146

Example of application



Technical data

GVL 8401-K-RC V2	
Supply	230 V AC / 50 Hz / 56 VA
Stand-by power	< 1 W
Output	24 V DC / 1 A
Mode of operation	Short-time duty 20 % duty cycle
Type of protection	IP 66
Temperature range	-5 °C ... +40 °C
Housing	Polycarbonate
Colour	Light grey (~ RAL 7035)
W x H x D	139 x 180 x 77 mm
Weight	0.97 kg

Design

Type	Art. No.
GVL 8401-K-RC V2	30.241.90

GVL 8401-K-RC V2



Performance features

- » Compact ventilation control panels with an integrated wireless receiver for controlling 24 V DC window drives
- » Up to 1 A total drive current
- » 2 ventilation groups
- » Optional individual and/or control circuit (OPEN / CLOSED)
- » Configurable ventilation safety function (storage operation OPEN / CLOSED)
- » Freely programmable group assignment for central inputs (weather, time, etc.)
- » Operation via wireless remote control (Multiple control panels can be controlled with one remote control)
- » 868 MHz radio frequency, permitted throughout the EU
- » High level of security against external control - 24 bit address code and transmitting code change at each button press (hopping code)

Accessories

Operation elements



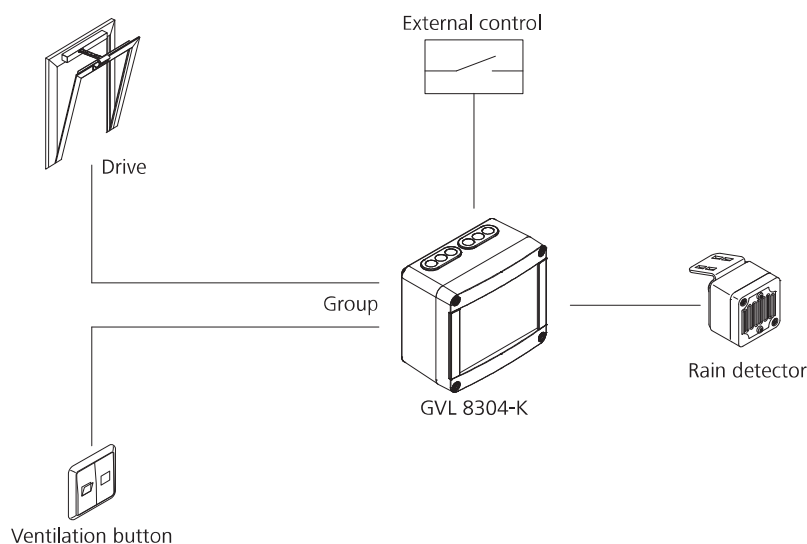
starting on page 152

Weather sensors



starting on page 146

Example of application



Technical data

	GVL 8304-K
Supply	230 V AC / 50 Hz / 120 VA
Stand-by power	4.3 W
Output	24 V DC / 4 A
Mode of operation	Short-time duty 20 % duty cycle
Type of protection	IP 50
Temperature range	-5 °C ... +40 °C
Housing	Plastic
Colour	Light grey (~ RAL 7035)
W x H x D	172 x 151 x 95 mm
Weight	2.00 kg

Approvals / Certificates

Article also available with the following permissions under other article numbers. Technical data may deviate. Find out about permission details from your D+H Partner.



Design

Type	Art. No.
GVL 8304-K	30.202.10

GVL 8304-K



Performance features

- » Compact ventilation control panel
- » For controlling 24 V DC window drives
- » Up to 4 A total drive current
- » 1 ventilation group
- » Input for external controller, e.g. timer
- » Configurable ventilation safety function (storage operation OPEN / CLOSED)
- » Optional connection to rain detectors or wind / rain sensors without an additional module
- » Surface-mounted plastic housing

Accessories

Operation elements

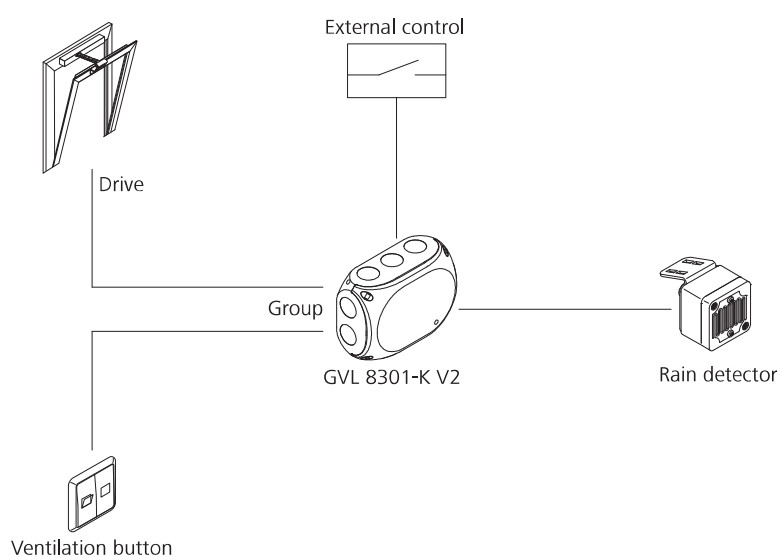
Weather sensors



starting on page 152

starting on page 146

Example of application



Technical data

	GVL 8301-K V2
Supply	230 V AC / 50 Hz / 30 VA
Stand-by power	4.3 W
Output	24 V DC / 1 A
Mode of operation	Short-time duty 20 % duty cycle
Type of protection	IP 66
Temperature range	-5 °C ... +40 °C
Housing	Polycarbonate
Colour	Light grey (~ RAL 7035)
W x H x D	139 x 180 x 77 mm
Weight	0.85 kg

Design

Type	Art. No.
GVL 8301-K V2	30.242.00

GVL 8301-K V2



Performance features

- » Compact ventilation control panel
- » For controlling 24 V DC window drives
- » Up to 1 A total drive current
- » 1 ventilation group
- » Input for external controller, e.g. timer
- » Ventilation safety function (storage operation OPEN / CLOSED)
- » Ability to connect drives with TMS function
- » Optional connection to rain detectors or wind / rain sensors without an additional module
- » Surface-mounted plastic housing

Accessories

Operation elements



starting on page 152

Weather sensors



starting on page 146