

## WCO Natural air extract

The Colt WCO is a natural air extract ventilator, which is suited for day-to-day ventilation and automatic fire ventilation. The WCO has louvres on top, which can be set to any position required and two controllable side dampers; consequently the WCO can be used in all weather conditions. Moreover the capacity can be matched exactly to requirements. The WCO is used in (semi-) industrial buildings and in utility buildings.

The WCO consists of the following parts:

### 1. Base/casing

The casing is manufactured from high-quality corrosion-free Colterra.

### 2. Louvres

The louvres are available in three versions:

- Single-skinned aluminium with or without sealing brushes
- Double-skinned aluminium with or without sealing brushes
- Double-skinned transparent polycarbonate with sealing brushes

If the louvres are opened daylight can enter.

### 3. Controllable side dampers

If the louvres are closed in case of bad weather, permanent ventilation is nevertheless possible by opening the inner dampers, which are 200 mm high.



### 4. Operation

Various possibilities:

- Cable control
- Compressed air control
- Electrical control by Electro-servomotor 24V or 220V

It is possible to expand the control with a rain detector, so that the louvres will close and the side dampers will open automatically in case of rain.

### Thermal override

If the WCO is used as automatic fire ventilation unit, the control system is equipped with a fusible link. On reaching a certain temperature (72°C, 93°C or 141°C) the unit will automatically open by spring.

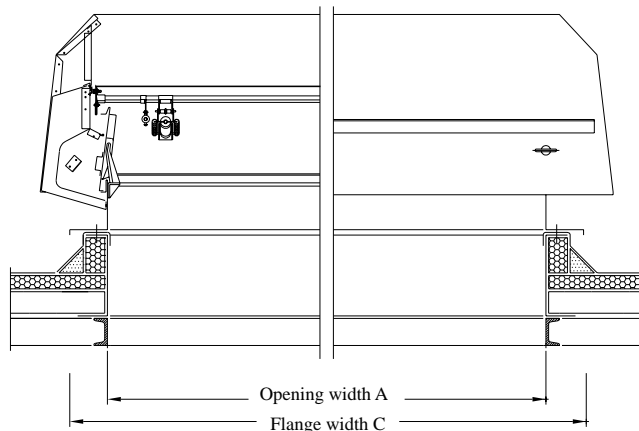


The Colt WCO can be fixed without problem on all kinds of roof structures: on an upstand, on or under a corrugated sheet, in a glazed roof or on a frame. The mounting flange and the flange size can be adapted to the roof construction. It is possible to install the WCO in a slope of 0 to 45° on the longitudinal axis and max. 3° on the lateral axis.

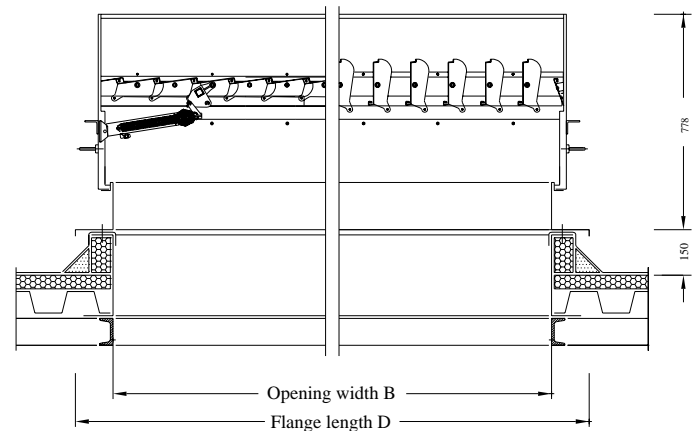
**COLT**



## Technical data:



Transverse cross section



Longitudinal cross section

Type	Dimension(mm)				Louvres Number	Weight(kg)		
	Opening width A	Opening length B	Flange width C	Flange length D		WCO/NL/.../		
						A1	A2	T2PC
1215	1000	1170	1250	1420	9	55	63	65
1218	1000	1436	1250	1686	11	58	66	68
1221	1000	1702	1250	1952	13	60	68	70
1223	1000	1968	1250	2218	15	66	74	75
1225	1000	2101	1250	2351	16	67	75	77
1226	1000	2234	1250	2484	17	68	76	78
1227	1000	2367	1250	2617	18	69	77	79
1229	1000	2500	1250	2750	19	70	78	80
1232	1000	2899	1250	3149	22	74	82	84
1236	1000	3298	1250	3548	25	78	86	88
1515	1300	1170	1550	1420	9	58	67	70
1518	1300	1436	1550	1686	11	63	72	75
1521	1300	1702	1550	1952	13	65	74	77
1523	1300	1968	1550	2218	15	71	80	83
1525	1300	2101	1550	2351	16	72	81	84
1526	1300	2234	1550	2484	17	73	82	85
1527	1300	2367	1550	2617	18	75	84	87
1529	1300	2500	1550	2750	19	78	87	90
1532	1300	2899	1550	3149	22	82	91	94
1536	1300	3298	1550	3548	25	90	99	102
1815	1600	1170	1850	1420	9	66	78	81
1818	1600	1436	1850	1686	11	72	84	87
1821	1600	1702	1850	1952	13	78	90	93
1823	1600	1968	1850	2218	15	84	96	97
1825	1600	2101	1850	2351	16	86	98	101
1826	1600	2234	1850	2484	17	88	100	103
1827	1600	2367	1850	2617	18	90	102	105
1829	1600	2500	1850	2750	19	92	104	107
1832	1600	2899	1850	3149	22	98	110	113
1836	1600	3298	1850	3548	25	109	121	124