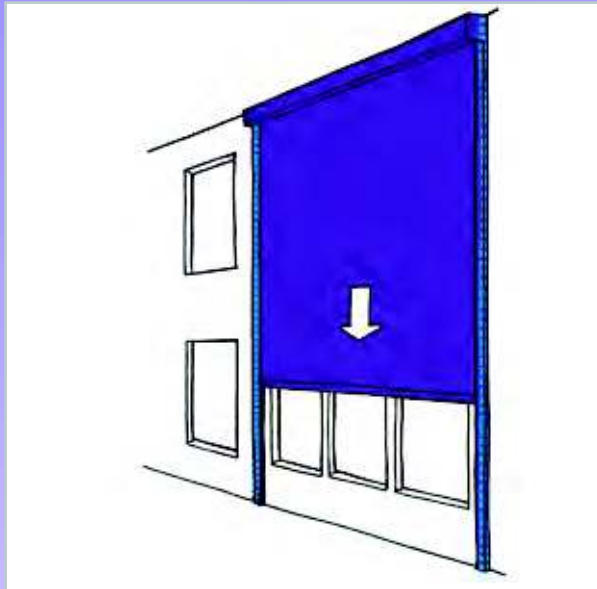


Fibershield-F

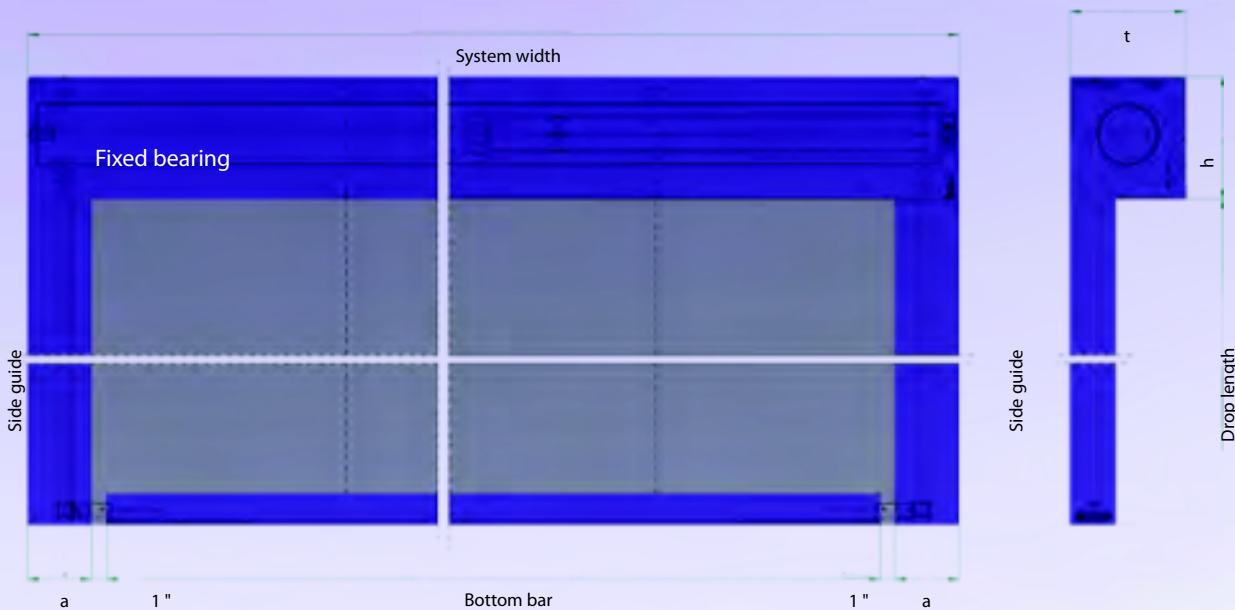
The textile fire protection closure for openings in façades, installation outside a building



**Outdoor weathering test with exterior application over 10 years
UB III / B-05-006-A1**

Description of the Fibershield-F system

- special design for the application under climatic influence
- highest variability for installations to façades (non insulated façades, insulated façades, with combustible or non-combustible insulation)
- proven components for the application on the outside of a building, more than 15 years of experience
- temperature control to avoid the icing of the side guides
- safe drive units which guarantee a safe closing even in case of low temperatures
- Gravigen-effect – closing without auxiliary power supply, no fire-rated cables necessary



a = Dimension for the side guide

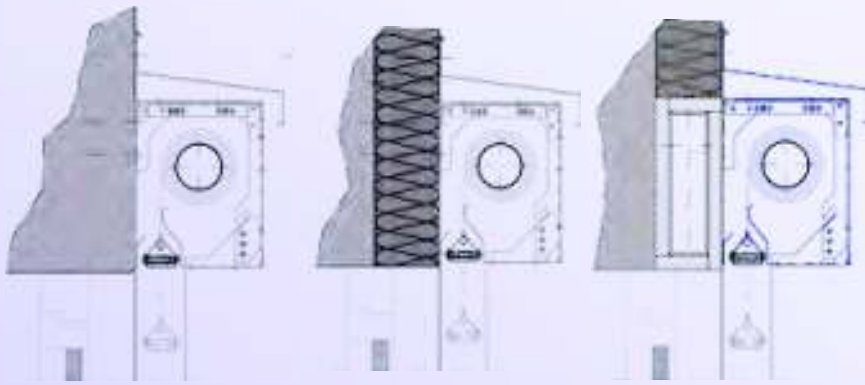
Fabric	System width	Drop length	t (mm)	h (mm)
Heliotex EW	< 16' 5"	≤ 6'7"	7 1/2"	7 1/2"
Heliotex EW	< 16' 5"	≤ 19'8"	9 1/4"	11 1/4"
Protex 1100.1	< 16' 5"	< 11'6"	7 1/2"	7 1/2"
Protex 1100.1	< 16' 5"	> 11'6" - ≤ 19'8"	7 1/2"	7 3/4"
Protex 1100.1	< 16' 5"	> 19'6" - ≤ 22'11"	9 1/4"	11 1/4"

Standard dimensions

Special construction are possible for higher drop lengths or bigger system widths.



Installation of the housings



Without insulation

With combustible insulation

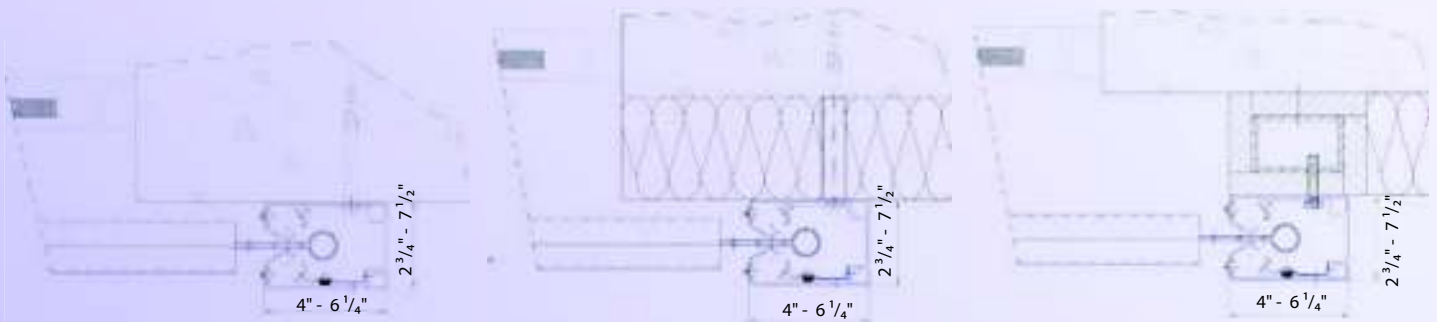
With non-combustible insulation

Bottom bars



(alternative solutions are possible in case of closing onto non-combustible materials)

Installation of the side guides






Without insulation

With non-combustible insulation

With combustible insulation

Protection targets

Protection targets	Integrity	Integrity with limitation of the heat transmission	Prevention of a transmission of flames from one level to another
			
Classification	E 120	EW 90	E 120
Fabric	Protex 1100-2S	Heliotex EW-90	Protex 1100-2S
Labeling Test reports	UL 864 OSHPD CA certificate- GU IV/97-73	UB III/B-08-012	B 15045

