

# EuroCo Natural (fire-) ventilation unit

The Colt EuroCo is a natural louvered ventilator which is suitable for exhausting smoke, heat and combustion fumes as well as for the supply of air which is necessary to effect a controlled fire. Moreover the EuroCo can be used for day-to-day ventilation and additional daylight. The EuroCo is used in (semi-) industrial buildings and utility building.

The EuroCo consists of the following components:

## 1. Base/upstand

The upstand is manufactured from high-grade corrosion-resistant Colterra aluminium.

## 2. Louvres

Various louver versions are possible, depending on the application:

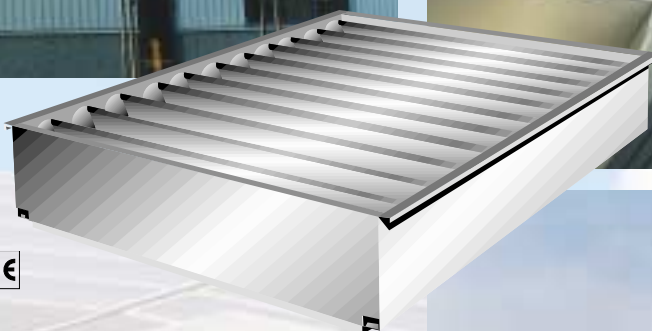
- Single-skinned aluminium with or without sealing brushes
- Double-skinned aluminium with or without sealing brushes
- Double-skinned transparent polycarbonate with sealing rubbers and -brushes
- Wired glass with sealing rubbers and -brushes

When the louvres are closed, the unit is guaranteed to be watertight because of an integrated patented drainage system.

## 3. Control mechanism

To operate the louvres there is a selection of several possibilities:

- Manual operation
- Cable operation
- Operation by one or two electric drive motors
- Operation by one or two pneumatic cylinders



## Thermal interruption

If the EuroCo is meant for use as automatic fire ventilation unit the operating mechanism has a fusible link as standard. The louvres open automatically or by spring tension when a specified temperature (72°C, 93°C or 141°C) is reached. If the units are equipped with pneumatic cylinders it is possible to replace the fusible link by a thermal override valve. In this case the unit meets with the DIN-standards.

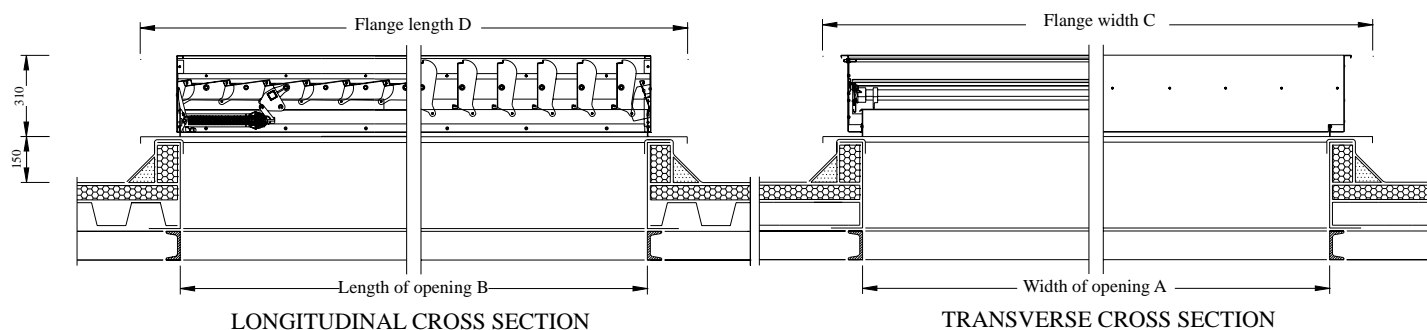
The unit can be installed on an upstand, on or under corrugated cladding, in glazing bars and against a frame in a vertical opening. Installation is possible at any angle in the longitudinal axis from horizontal to vertical. The maximum slope on the horizontal axis is 3°. The base and its dimensions can be adjusted to the building construction.



# COLT

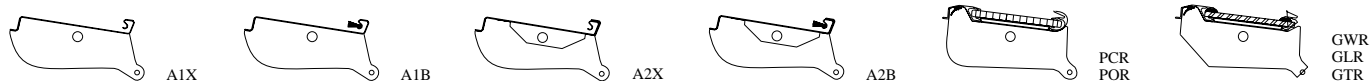


# Technical information EuroCo



Dimensions of opening								Dimensions of flange							
Opening width		Opening width		Opening width		Opening width		Flange width		Flange width		Flange width		Flange width	
Type	A	Type	B	Type	A	Type	B	Type	C	Type	D	Type	C	Type	D
07..	576	..10	705	23..	2126	..10	705	07..	826	..10	955	23..	2376	..10	955
09..	726	..11	838	25..	2326	..11	838	09..	976	..11	1088	25..	2576	..11	1088
10..	876	..13	971			..13	971	10..	1126	..13	1221			..13	1221
12..	1026	..14	1104			..14	1104	12..	1276	..14	1354			..14	1354
13..	1176	..15	1237			..15	1237	13..	1426	..15	1487			..15	1487
15..	1326	..17	1370			..17	1370	15..	1576	..17	1620			..17	1620
16..	1476	..18	1503			..18	1503	16..	1726	..18	1753			..18	1753
18..	1626	..19	1636			..19	1636	18..	1876	..19	1886			..19	1886
21..	1926	..21	1769			..21	1769	21..	2176	..21	2019			..21	2019
		..22	1092			..22	1902			..22	2152			..22	2152
		..23	2035			..23	2035			..23	2285			..23	2285
		..25	2168			..25	2168			..25	2418			..25	2418
		..26	2301			..26	2301			..26	2551			..26	2551
		..27	2434			..27	2434			..27	2684			..27	2684
		..29	2567			..29	2567			..29	2817			..29	2817
		..30	2700							..30	2950				
		..31	2833							..31	3083				
		..32	2966							..32	3216				
		..34	3099							..34	3349				
		..35	3232							..35	3482				
		..36	3365							..36	3615				
		..38	3498							..38	3748				

Louvres



Type	Single-skinned aluminium	Double-skinned aluminium	Poly-carbonate	Wired glass	Sealing brushes	Sealing rubbers	Weight per m <sup>2</sup>
A1X	●						15
A1B	●				●		15
A2X		●					20
A2B		●			●		20
PCR/POR			●		●	●	28
GWR/GLR/GTR				●	●	●	37